

Welcome to our community! We are delighted to welcome you to our community! You will find all of the information that you need to join your class below. Additionally, please review our student policies [here](#).

Please note: If you are not sure of your level, please do not write in your book or use the access code. If the book is unused, you can trade it for the correct level if you move classes. If you write in the book or use the access code, the book for your new class will cost \$40.

Friday Office Hour:

[Office Hour. Every Friday from 10:00 AM - 11:00 AM](#)

Morning Classes: 10:00 AM - 12:00 PM EST

Evening Classes: 6:30 PM - 8:30 PM EST

[中文说明书](#)

[Instrucciones en español](#)

[دستور العمل درى](#)

English Instructions:

Website: [Pearson Ebook/MyEnglishLab Website](#)

Video:

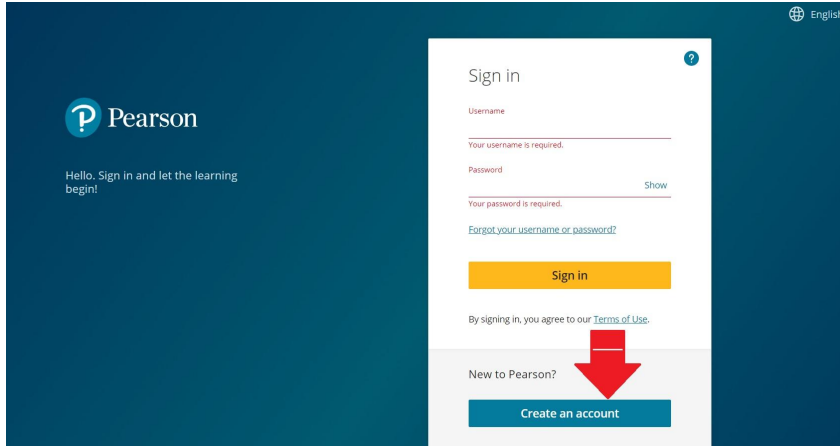
[Create an Account **Click Here](#)**

[Add a Product Code **Click Here](#)**

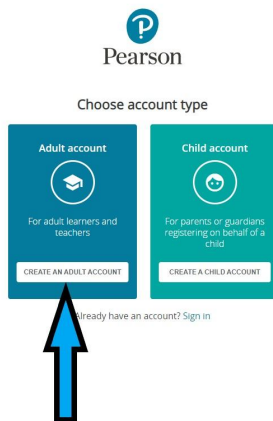
[Getting Started with MEL **Click Here](#)**

Photo:

1. Click create an account



2. Choose “create an adult account”



3. Enter your information and click “create an account”

Create an adult account

Email address
renee0214@gmail.com

Confirm email address
renee0214@gmail.com

Username
renee0214@gmail.com
 Same as email address

Password
•••••••• Show
Your password must have 8 or more characters, at least one uppercase letter, and one number.

First name
Rehee

Last name
McGie

Country
United States

I agree to the [Terms of Use](#) and acknowledge the [Privacy Policy](#).

Keep me informed of product news, special information, discounts and offers.

Create account

Already have an account? [Sign in](#)

4. You will see the screen below. Click “add a product.”

Dashboard Settings Notifications Exit

Hello, RE!

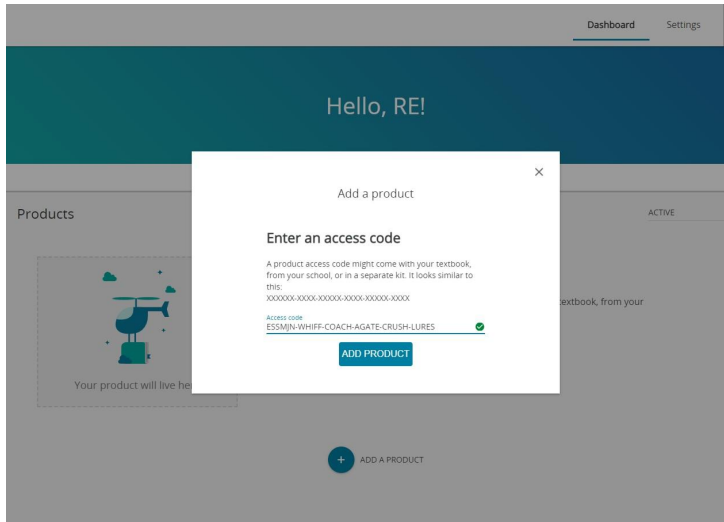
Products ACTIVE

Your product will live here

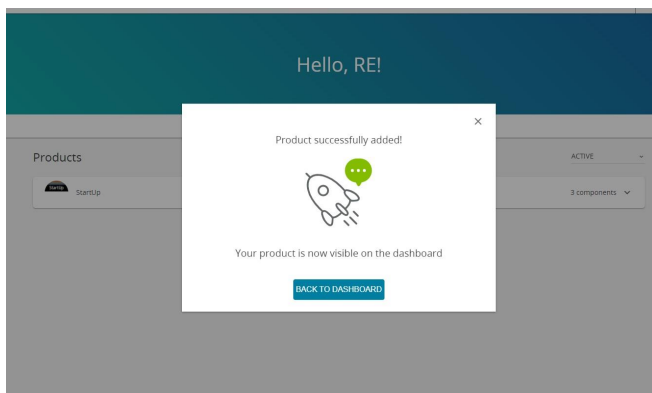
Add a product to get started
You'll need a product access code (or QR code). It might come with your textbook, from your school, or in a separate kit.
Access codes look similar to this:
ABC123-ABCD-123AB-1234-ABC123-ABCD
[Add a product](#)

+ ADD A PRODUCT

5. Enter the product code from the email we sent



6. Click “back to dashboard”



7. Join your class. Follow the instructions below:

[Instructions Join a class *Click Here!!*](#)